

**PLACER COUNTY**  
**COMPOSITE SAMPLE BALLOT**  
**SPECIAL DISTRICT ELECTION**  
**APRIL 24, 2007**

# PLACER

COUNTY OF



**ROSEVILLE JOINT UNION  
HIGH SCHOOL DISTRICT  
SPECIAL DISTRICT ELECTION  
TUESDAY, APRIL 24, 2007**

## **INSTRUCTIONS TO VOTERS AND VOTER'S INFORMATION PAMPHLET**

**IMPORTANT NOTICE TO VOTERS** – The Roseville Joint Union High School District Special Election will be conducted by mail. You have no polling place for this election because the voting precinct you live in is extremely small or has few voters. Your official ballot and a postage paid return envelope are enclosed with this pamphlet. Instructions on how to vote your ballot can be found inside this pamphlet.

For your convenience, staff from the Placer County Elections Division will be at the Pleasant Grove Community Church, 1730 Pleasant Grove Blvd., in Roseville, on April 24, 2007, from 7:00 AM to 8:00 PM to reissue lost, missing, damaged or mismarked ballots and to collect voted ballots.

Voted ballots must be received by the Placer County Elections Division no later than 8:00 PM on Tuesday, April 24, 2007. State law does not allow us to accept a postmark for this purpose, so please be sure to mail your ballot early. You may also drop your ballot off at the Pleasant Grove Community Church in Roseville on Election Day or at the Placer County Elections Division in Auburn up to and including Election Day (see next page for specific hours of operation).

If you have questions or need assistance, please telephone the Placer County Elections Division at 530-886-5650 or toll-free in California at 1-800-824-8683 or you may contact us by E-mail at [election@placer.ca.gov](mailto:election@placer.ca.gov).

**THE ENCLOSED BALLOT IS YOUR OFFICIAL  
BALLOT FOR THIS ELECTION.  
*PLEASE DO NOT DISCARD.***

# INSTRUCTIONS TO VOTERS

## TO VOTE:

- ★ Use a pencil or a pen with blue or black ink to mark the ballot.
- ★ Darken the oval completely (●).

To vote on a measure, COMPLETELY FILL IN THE OVAL beside the word "Yes" if you desire to vote in favor of the measure or beside the word "No" if you desire to vote against the measure.

**Marks not allowed:** All distinguishing marks on the ballot (such as your name, written comments, drawings, etc.) or erasures are forbidden and can make the ballot void.

**Damaged ballots:** If you incorrectly mark, tear or deface any portion of your ballot, contact the Placer County Elections Division at the telephone number on the back of this pamphlet for instructions on how to receive a replacement ballot or go to the Pleasant Grove Community Church on Election Day.

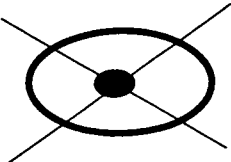
**AFTER YOU HAVE COMPLETED VOTING,** place the voted ballot into the postage-paid return envelope provided with this pamphlet, sign the envelope where requested and return your ballot to the Placer County Elections Division. **PLEASE NOTE that if you do not sign the return envelope where requested, your ballot cannot be counted. (Election Code Sec. 3011)**

**RIGHT**



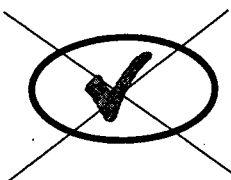
**Correct way to mark your ballot.**

**WRONG**



**Incorrect way to mark your ballot.**

**WRONG**



**Incorrect way to mark your ballot.**

## To be counted, your voted ballot must be returned in one of the following ways:

1. **By Mail** – The ballot must be received by the Placer County Elections Division no later than 8:00 PM on April 24, 2007. *Your ballot cannot be counted if received after 8:00 PM on Election Day, regardless of postmark.*
2. **By You in Person Prior to Election Day** – The Elections Division (2956 Richardson Drive, Auburn) is open Monday through Friday from 8:00 AM to 5:00 PM (excluding holidays). Ballots may be returned to the office during those hours. For after-hours service, the Elections Division has a 24-hour drive-up drop box located in front of our office. For directions to our office, please call 530-886-5650 or toll free in California 1-800-824-8683.
3. **By Your Authorized Representative** – If you are unable to personally deliver your ballot because of illness or other disability, you may authorize your spouse, child, parent, grandparent, grandchild, brother, sister or housemate to deliver the voted ballot on your behalf. Please complete the required information on the return envelope and have your ballot delivered by your authorized representative to the Placer County Elections Division.
4. **By You in Person on Election Day** – The Placer County Elections Division (2956 Richardson Drive, Auburn) or the Pleasant Grove Community Church, (1730 Pleasant Grove Blvd., Roseville) will be open from 7:00 AM to 8:00 PM on Election Day, April 24, 2007, for any voter who:
  - wishes to deliver his/her ballot in person;
  - prefers to vote his/her ballot in a voting booth;
  - needs a replacement ballot;
  - has questions about his/her eligibility to vote; or
  - requires assistance with voting.

**IF YOU LOSE YOUR BALLOT:** You may vote a provisional ballot at either of the locations listed above on Election Day, or at the Placer County Elections Division in Auburn, beginning March 26, 2007. Once election officials confirm that you are eligible to vote and did not vote the ballot mailed to you, your provisional ballot will be counted.

# **VOTER'S INFORMATION PAMPHLET**

**The following pages contain:**

- **BALLOT MEASURE**
- **IMPARTIAL ANALYSIS**
- **ARGUMENT**
- **MAP**
- **TAX RATE STATEMENT**

**By law, this material is printed exactly as submitted. This includes any spelling or grammatical errors as submitted by the author on the original documents.**

---

**THE ARGUMENT IN SUPPORT OF THE  
PROPOSED MEASURE IS THE OPINION  
OF THE AUTHOR**

---

---

**MEASURE A**

---

**PROPOSAL TO ISSUE BONDS FOR ROSEVILLE JOINT UNION HIGH SCHOOL DISTRICT  
FACILITIES IMPROVEMENT DISTRICT NO. 1**

---

Shall Facilities Improvement District No. 1 of the Roseville Joint Union High School District issue \$115 million in bonds at legal interest rates to construct a comprehensive high school comparable to existing District facilities, acquire land, install infrastructure and fund all related construction, planning and environmental expenses associated therewith?

**BONDS YES** \_\_\_\_\_

**BONDS NO** \_\_\_\_\_

---

**IMPARTIAL ANALYSIS BY PLACER COUNTY COUNSEL**

---

California law, Education Code §§ 15300 – 15425, allows school districts to designate targeted areas within their territory as School Facilities Improvement Districts (SFID). Those SFIDs can then issue general obligation bonds to pay for facility improvements that benefit that specific area.

The Roseville Joint Union High School District Board of Trustees has formed School Facilities Improvement District #1 (SFID #1) in its Resolution No. 0701. The map of this newly formed facilities improvement district is included in this voter pamphlet, and delineates the boundaries of the new district and identifies those parts of the Roseville Joint Union High School District that are not included within SFID #1.

Only those qualified voters within SFID #1 will vote on this measure, and, if approved by the voters, only those property owners within SFID #1 will have the ad valorem property tax placed on their properties to pay off the bonds.

The Board of Trustees of the Roseville Joint Union High School District (the "Board"), has, in its role as legislative body for SFID #1, by Resolution No. 0702 ordered an election to submit to the voters

of SFID #1 a measure that would authorize the sale of general obligation bonds in the amount of one hundred fifteen million dollars (\$115,000,000). Ad valorem taxes would be levied upon taxable property within the boundaries of SFID #1 to repay the bonds.

A "YES" vote is a vote to authorize the issuance and sale of up to \$115,000,000 of general obligation bonds to be repaid through a property tax based upon the assessed value of taxable property in SFID #1.

A "NO" vote is a vote not to authorize the issuance and sale of the bonds.

This measure passes if two-thirds of those voting on the measure vote "yes."

Anthony J. La Bouff  
County Counsel

By: Sabrina M. Thompson  
Deputy County Counsel

---

## ARGUMENT IN FAVOR OF MEASURE A

Measure A will help prevent classroom overcrowding before it hits crisis levels - by planning ahead to meet the imminent need for additional high school space in Northwest Roseville.

This area will grow rapidly. We're expecting 25,000 new homes to be built in Northwest Roseville within the next 15 years - adding about 2,200 high school students to our neighborhoods.

Unless we build a new high school, existing schools will be overwhelmed - leading to overcrowded classrooms and cramped portable trailers. By planning ahead, we can also reduce construction costs, which increase every year we wait.

With the passage of Measure A, we can ensure that new families locating in our community will have a modern high school right where and when they need it - not after it's too late.

Developer fees, while approximately half the cost of the new school, are insufficient. Bond funds are also necessary. But the burden of paying the bonds will fall on those who live in the area served by the school, and exempts residents in age restricted homes. This approach is fair to taxpayers throughout the community.

In addition to helping our children, quality schools help our local economy. Schools are major consumers and employers. They contribute directly and indirectly to local tax revenues, and good neighborhood schools help increase the value of our homes.

The Roseville Joint Union High School District has a proven track record of using our educational dollars wisely - ensuring they're invested in clean, safe, well-equipped schools where children are inspired to learn. Measure A funds will be no exception.

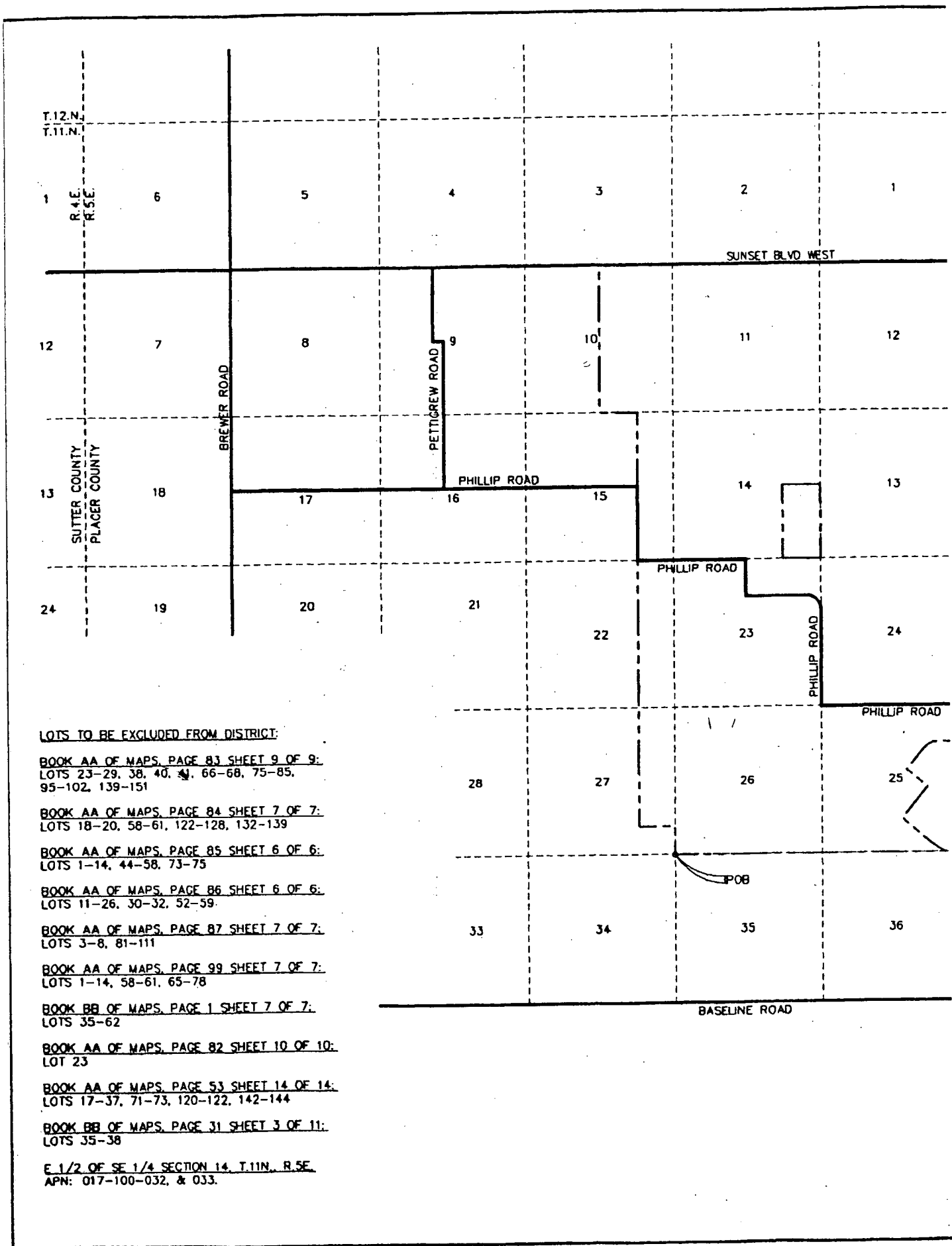
Better schools mean better students. And better students mean a stronger community, a more educated workforce and a brighter future for all.

For homeowners, children and better schools, YES on Measure A.

Garry Genzlinger, President, Roseville Joint Union High School District Board of Trustees  
Robert M. Weygandt, Supervisor District 2 County of Placer  
Gina Garbolino, Mayor Pro Tempore City of Roseville  
Lewis K. Uhler, President, The National Tax-Limitation Committee  
John F. Corin, Voter

---

**NO ARGUMENT AGAINST MEASURE A WAS SUBMITTED**



**LOTS TO BE EXCLUDED FROM DISTRICT:**

BOOK AA OF MAPS, PAGE 83 SHEET 9 OF 9:  
 LOTS 23-29, 38, 40, 41, 66-68, 75-85,  
 95-102, 139-151

BOOK AA OF MAPS, PAGE 84 SHEET 7 OF 7:  
 LOTS 18-20, 58-61, 122-128, 132-139

BOOK AA OF MAPS, PAGE 85 SHEET 6 OF 6:  
 LOTS 1-14, 44-58, 73-75

BOOK AA OF MAPS, PAGE 86 SHEET 6 OF 6:  
 LOTS 11-26, 30-32, 52-59

BOOK AA OF MAPS, PAGE 87 SHEET 7 OF 7:  
 LOTS 3-8, 81-111

BOOK AA OF MAPS, PAGE 99 SHEET 7 OF 7:  
 LOTS 1-14, 58-61, 65-78

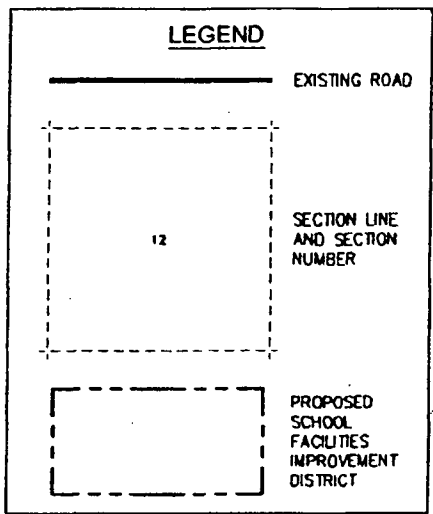
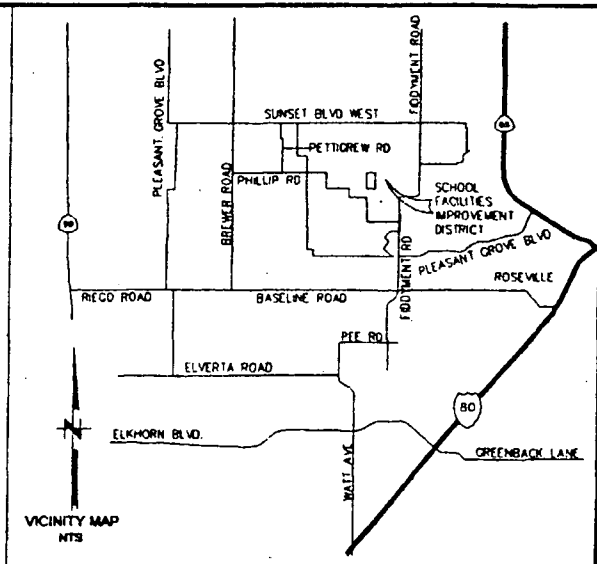
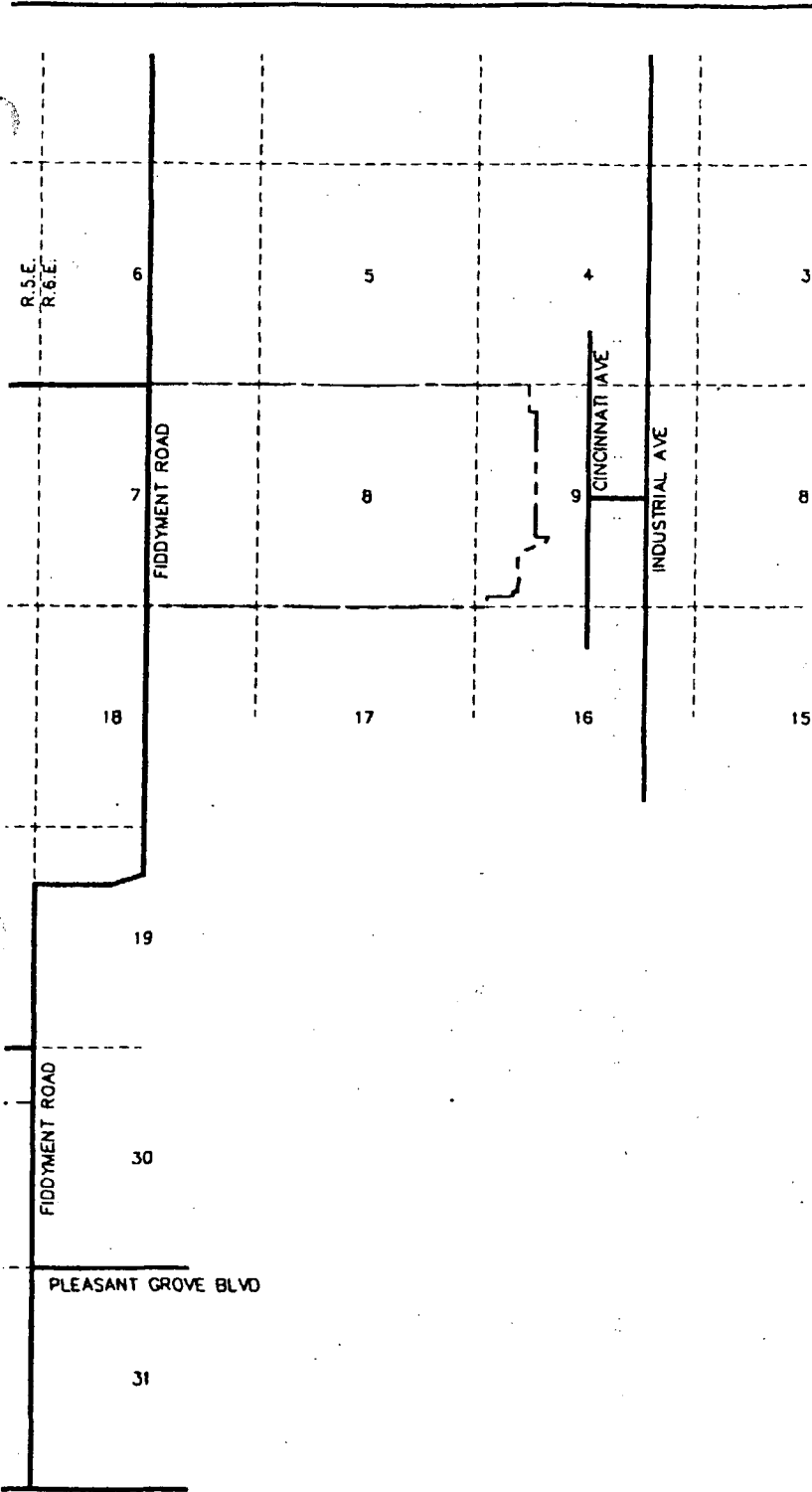
BOOK BB OF MAPS, PAGE 1 SHEET 7 OF 7:  
 LOTS 35-62

BOOK AA OF MAPS, PAGE 82 SHEET 10 OF 10:  
 LOT 23

BOOK AA OF MAPS, PAGE 53 SHEET 14 OF 14:  
 LOTS 17-37, 71-73, 120-122, 142-144

BOOK BB OF MAPS, PAGE 31 SHEET 3 OF 11:  
 LOTS 35-38

E 1/2 OF SE 1/4 SECTION 14, T.11N., R.5E.  
 APN: 017-100-032, & 033.



**ROSEVILLE JOINT UNION HIGH  
 SCHOOL DISTRICT**  
 PLACER COUNTY, CALIFORNIA  
**PROPOSED SCHOOL FACILITIES  
 IMPROVEMENT DISTRICT**  
 DECEMBER 2006

**A.R. ASSOCIATES**  
 275 NEVADA STREET AUBURN, CA 95603  
 ph: (530) 888-1288

C:\PROJECTS\106xxx\106079\06079-ex.dwg 1/4/2007 9:22:18 AM PST



## TAX RATE STATEMENT

An election will be held on April 24, 2007, in the Roseville Joint Union High School District School Facilities Improvement District No. 1 (the "Improvement District No. 1"), located in a specified portion of the territory of the Roseville Joint Union High School District (the "District") located in Placer County, to authorize the sale of up to \$115,000,000 in bonds of Improvement District No. 1 to finance high school facilities as described in the proposition. If the bonds are approved, the District expects to sell the bonds of Improvement District No. 1 in several series over time. Principal and interest on the bonds will be payable from the proceeds of tax levies made only upon the taxable property in Improvement District No. 1. The following information is provided in compliance with Sections 9400-9404 of the Elections Code of the State of California.

1. The best estimate of the tax which would be required to be levied to fund this bond issue during the first fiscal year after the sale of the first series of bonds, based on estimated assessed valuations available at the time of filing of this statement, is \$0.03869 per \$100 (\$38.69 per \$100,000) of assessed valuation in fiscal year 2010-11.
2. The best estimate of the tax rate which would be required to be levied to fund this bond issue during the first fiscal year after the sale of the last series of bonds, based on estimated assessed valuations available at the time of filing of this statement, is \$0.03120 per \$100 (\$31.20 per \$100,000) of assessed valuation in fiscal year 2014-15.
3. The best estimate of the highest tax rate which would be required to be levied to fund this bond issue, based on estimated assessed valuations available at the time of filing of this statement, is \$0.03869 per \$100 (\$38.69 per \$100,000) of assessed valuation in fiscal year 2010-11.

These estimates would result in an average annual tax rate over the life of the bonds of \$0.02629 per \$100 of assessed valuation. Based on these tax rates, the estimated average annual tax over the term of the bonds would be \$26.29 for \$100,000 of assessed valuation for property in Improvement District No. 1.

Voters should note that the estimated tax rates are based on the *assessed value* of taxable property on the official tax rolls of the county, *not* on the property's market value. In addition, taxpayers eligible for a property tax exemption, such as the homeowner's exemption, will be taxed at a lower effective tax rate than described above. Certain taxpayers may also be eligible to postpone payment of taxes. Property owners should consult their own property tax bills and tax advisors to determine their property's assessed value and any applicable tax exemptions.

Attention of all voters is directed to the fact that the foregoing information is based upon the District's projections and estimates, which are not binding upon the District. The actual tax rates and the years in which they will apply may vary from those presently estimated, due to variations from these estimates in the timing of bond sales, the amount of bonds sold and market interest rates at the time of each sale, and actual assessed valuations over the term of repayment of the bonds. The dates of sale and the amount of bonds sold at any given time will be determined by the District based on the need for construction funds and other factors. The actual interest rates at which the bonds will be sold will depend on the bond market at the time of each sale. Actual future assessed valuation will depend upon the amount and value of taxable property within Improvement District No. 1 as determined by the County Assessor in the annual assessment and the equalization process.

Dated: January 30, 2007

Tony Monetti  
Superintendent  
Roseville Joint Union High School District

RESOLUTION NO. 0702

RESOLUTION OF THE BOARD OF TRUSTEES OF THE ROSEVILLE JOINT UNION HIGH SCHOOL DISTRICT ACTING AS THE LEGISLATIVE BODY OF THE SCHOOL FACILITIES IMPROVEMENT DISTRICT NO. 1 OF THE ROSEVILLE JOINT UNION HIGH SCHOOL DISTRICT ORDERING AN ELECTION, AND ESTABLISHING SPECIFICATIONS OF THE ELECTION ORDER

WHEREAS, the Board of Trustees of the Roseville Joint Union High School District (the "Board") has determined that certain properties and educational facilities within the School Facilities Improvement District No. 1 of the Roseville Joint Union High School District (the "Improvement District"), within Placer County need to be acquired, constructed, improved, and equipped to enable the Roseville Joint Union High School District (the "District") to enhance the educational opportunities of the students in the District; and

WHEREAS, due to the need to plan for expected population growth in the Improvement District, the District needs to respond to such growth by expanding its classroom capacity and constructing new school facilities; and

WHEREAS, in the judgment of the Board, it is advisable to provide additional funding for such facility repair and construction, technology, and safety needs in the Improvement District by means of a general obligation bond; and

WHEREAS, Proposition 46, approved by the voters of the State of California on June 3, 1986 ("Proposition 46"), amended Section 1(b) of Article XIII A of the California Constitution by adding a provision which exempts from the 1% of full cash value limitation, those ad valorem taxes used to pay for debt service of any bonded indebtedness for the acquisition or improvement of real property approved on or after July 1, 1978, by two-thirds of the votes cast by voters voting on the proposition; and

WHEREAS, Chapter 3, Part 10, Division 1, Title 1 (commencing with Section 15300) of the Education Code (the "Act") provides that the Improvement District may call an election for the purpose of seeking voter approval for the issuance of general obligation bonds by the Improvement

District; and

WHEREAS, the Placer County Board of Supervisors has adopted a resolution causing the provisions of the Act to be applicable within Placer County; and

WHEREAS, the Board desires to authorize the filing of a ballot argument in favor of the proposition to be submitted to the voters at the election; and

WHEREAS, pursuant to the California Elections Code, it is appropriate for the Board to request consolidation of the election with any and all other elections to be held on April 24, 2007, and to request the Placer County Registrar of Voters to perform certain election services for the District; and

WHEREAS, in the judgment of the Board, it is advisable to request the Placer County Registrar of Voters to call an election pursuant to Proposition 46 on the question of whether general obligation bonds shall be issued and sold on behalf of the District for purposes set forth below; and

NOW THEREFORE, THE BOARD OF TRUSTEES OF THE ROSEVILLE JOINT UNION HIGH SCHOOL DISTRICT ACTING AS THE LEGISLATIVE BODY OF THE SCHOOL FACILITIES IMPROVEMENT DISTRICT NO. 1 OF THE ROSEVILLE JOINT UNION HIGH SCHOOL DISTRICT DOES HEREBY RESOLVE, DETERMINE AND ORDER AS FOLLOWS:

Section 1. That the Board, pursuant to Education Code Sections 15100 et seq. (including Sections 15300 et seq.), and Government Code Section 53506, hereby requests the Placer County Registrar of Voters to conduct an election under the provisions of the Proposition 46 Act and submit to the electors of the Improvement District the question of whether bonds of the Improvement District in the aggregate principal amount not to exceed \$115,000,000 (the "Bonds") shall be issued and sold for the purpose of raising money for the purposes described in Exhibit A hereto.

Section 2. That the date of the election shall be April 24, 2007.

MEASURE A RESOLUTION  
CONTINUED ON NEXT PAGE

**MEASURE A RESOLUTION  
CONTINUED**

Section 3. That the purpose of the election shall be for the voters in the Improvement District to vote on a proposition, a copy of which is attached hereto and marked Exhibit "A" and incorporated by reference herein, containing the question of whether the Improvement District shall issue the Bonds to pay for improvements to schools, to the extent permitted by such proposition.

Section 4. That the authority for ordering the election is contained in Education Code Sections 15340, and Government Code Section 53506.

Section 5. That the authority for the specifications of this election order is contained in Sections 5322 of the Education Code.

Section 6. That Placer County Registrar of Voters is hereby requested to consolidate the election ordered hereby with any and all other elections to be held on April 24, 2007 within the District.

Section 7. That the Secretary of the Board is hereby directed to send a certified copy of this Resolution to the Placer County Registrar of Voters no later than January 18, 2007. That this Resolution shall stand as the "order of election" to the Placer County Registrar of Voters to call an election within the boundaries of the Improvement District on April 10, 2007. The Board is further authorized to submit a primary argument in support of the bond measure.

Section 8. That the maturity of any Bonds issued pursuant to Section 15300 et seq. of the Education Code hereto shall have a maturity not exceeding twenty-five (25) years, and Bonds issued pursuant to Section 53506 of the Government Code shall have a maturity of not exceeding forty (40) years. The maximum rate of interest on any Bond shall not exceed the maximum rate allowed by Education Code Sections 15140 to 15143, as modified by Government Code Section 53531.

Section 9. That the Board requests the governing body of any such other political

subdivision, or any officer otherwise authorized by law, to partially or completely consolidate such election and to further provide that the canvass be made by any body or official authorized by law to canvass the returns of the election; and that the Board consents to such consolidation.

Section 10. Pursuant to Section 5303 of the Education Code and Section 10002 of the Elections Code, the Board of Supervisors of Placer County is requested to permit the Registrar of Voters to render all services specified by Section 10418 of the Elections Code relating to the election, for which services the District agrees to reimburse Placer County, such services to include the publication of a Formal Notice of School Bond and the mailing of the sample ballot and tax rate statement (described in Section 9401 of the Elections Code) pursuant to the terms of Section 5363 of the Education Code and Section 12112 of the Elections Code.

ADOPTED, SIGNED AND APPROVED this 16th day of January, 2007.

BOARD OF TRUSTEES OF THE ROSEVILLE  
JOINT UNION HIGH SCHOOL DISTRICT ACTING  
AS THE LEGISLATIVE BODY OF THE SCHOOL  
FACILITIES IMPROVEMENT DISTRICT NO. 1 OF  
THE ROSEVILLE JOINT UNION HIGH SCHOOL  
DISTRICT

By Garry Genzlinger  
President

Attest:  
Tony Monetti  
Secretary

AYES: Lafferty, Stauss, Genzlinger  
NOES:  
ABSENT: Duran, Pinney  
ABSTENTIONS:

EXHIBIT A

"Shall Facilities Improvement District No. 1 of the Roseville Joint Union High School District issue \$115 million in bonds at legal interest rates to construct a comprehensive high school comparable to existing District facilities, acquire land, install infrastructure and fund all related construction, planning and environmental expenses associated therewith?"

Bonds – Yes

Bonds – No

## IMPORTANT VOTER INFORMATION

The Roseville Joint Union High School District Special District Election will be conducted by mail on April 24, 2007. Your official ballot and a postage paid envelope are enclosed with this pamphlet.

Your voted mail ballot must be in the Elections Division office by 8:00 PM on Election Day. If your ballot arrives later than April 24, 2007 (even with an April 24, 2007 postmark), your ballot cannot be counted.

If you prefer, on Election Day you may drop off your ballot at the Pleasant Grove Community Church at 1730 Pleasant Grove Blvd., in Roseville, from 7:00 AM to 8:00 PM. Elections Staff will be in Roseville to accommodate voters in reissuing lost, missing, damaged or mismarked ballots and to collect voted ballots.

The Placer County Elections Division also has an after hours drive-up drop box located at 2956 Richardson Drive, Auburn where voted ballots can be deposited from now until 8:00 PM on Election Day.

Placer County voters can come to the Elections Division located at 2956 Richardson Drive in Auburn to vote, pick up mail ballots or drop off their voted ballots. Regular office hours are Monday-Friday from 8:00 AM to 5:00 PM.

## TOP 5 REASONS

### WHY YOUR MAIL BALLOT MAY NOT BE COUNTED

1. **NO SIGNATURE.** State law requires the Elections Division to match the signature on your registration card to the signature on the outside of your return envelope before we count your ballot. You must sign your return envelope or your ballot cannot be counted.
2. **UNAUTHORIZED RETURN.** While most mail ballot voters return their voted ballots by mail, you may choose to return your ballot in person to the Placer County Elections Division in Auburn. You may also authorize certain people to return your ballot, but you must sign your envelope where required and the designee must print his/her name and sign the authorization box on the return envelope or we cannot accept your ballot from that person.
3. **BALLOT ARRIVES AFTER 8:00 PM ON ELECTION DAY.** We must receive your ballot at the Placer County Elections Division in Auburn no later than 8:00 PM on Election Day for it to count. An Election Day postmark does not allow us to count your ballot if delivered after Election Day, so mail your ballot as early as possible.
4. **RETURNING YOUR BALLOT IN A PLAIN ENVELOPE.** In most instances, state law does not allow the Elections Division to count your ballot unless the ballot is returned in the envelope we have provided to you. If you lose your return envelope, call us at 530-886-5650 or toll-free in California 800-824-8683 and we will send you another return envelope.
5. **SIGNING YOUR BALLOT.** We cannot count your ballot if you make any identifying marks on it (like a signature or printed name). Sign your return envelope – not your official ballot.

**JIM McCAULEY**  
**PLACER COUNTY CLERK-RECORDER-**  
**REGISTRAR OF VOTERS**

2956 RICHARDSON DRIVE  
PO BOX 5278

AUBURN CA 95604-5278

For questions please call 530-886-5650  
or toll free in California 1-800-824-8683

E-mail: [election@placer.ca.gov](mailto:election@placer.ca.gov)

Website: [www.placer.ca.gov/elections](http://www.placer.ca.gov/elections)



**OFFICIAL SPECIAL ELECTION BALLOT**

**APRIL 24, 2007**

**624061**

**MAIL**

**PLACER COUNTY, CALIFORNIA**

**INSTRUCTIONS TO VOTERS:** To vote for or against a measure, use a pencil or a pen with blue or black ink and completely darken in OVAL next to the word "YES" or the word "NO". All distinguishing marks or erasures are forbidden and make the ballot void. If you tear or wrongly mark this ballot, return it and get another.

**VOTE LIKE THIS: ● PLEASE FILL IN THE OVAL COMPLETELY**

**MEASURE SUBMITTED  
TO THE VOTERS**

**DISTRICT**

**ROSEVILLE JOINT UNION  
HIGH SCHOOL DISTRICT**

**A** Shall Facilities Improvement District No. 1 of the Roseville Joint Union High School District issue \$115 million in bonds at legal interest rates to construct a comprehensive high school comparable to existing District facilities, acquire land, install infrastructure and fund all related construction, planning and environmental expenses associated therewith?

**BONDS YES**

**BONDS NO**

**END OF BALLOT**